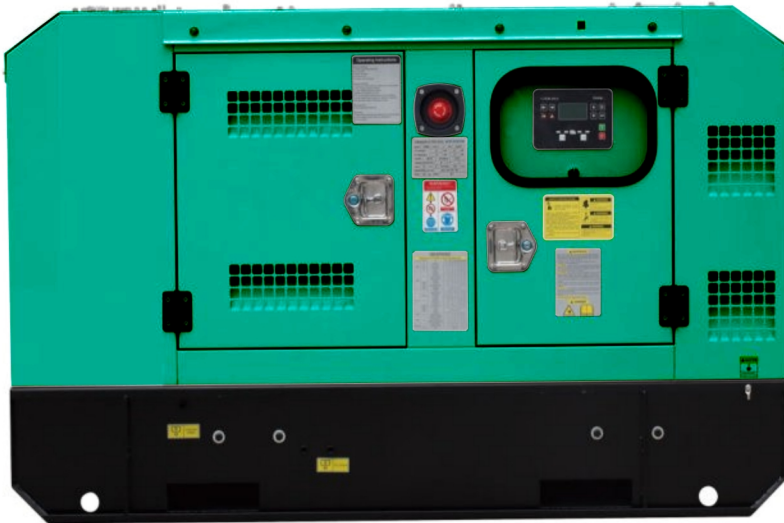


# DIESEL GENERATOR DATA SHEET

## HIPOWER DIESEL GENERATOR

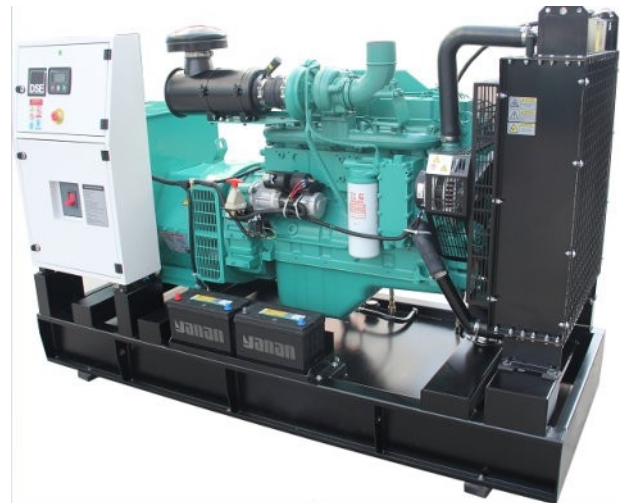
Powered by Cummins

Model:PGD212C



### I . GENERAL DATA

Prime Power	kW/kVA	160	200
Standby Power	kW/kVA	170	212
Frequency	Hz/rpm	60	1800
Voltage	V	440	254
Current	A	262	
Connection	/	3P 4W/Y	
Rated Power Factor	/	0.8	
Open Type (L×W×H)	mm	2400×950×1570	
Open Type(Weight)	kg	1650	
Silent Type (L×W×H)	mm	2800×1100×1800	
Silent Type(Weight)	kg	2250	



■ Available for voltages 400/230V, 480/277V, 380/220V, 440/254V, 416/240V, 220/127V, 208/120V

■ All datas based on ISO 3046, altitude 100m (328ft), barometric pressure 100kPa (29.53inHg), air temperature 25 °C (77°F), relative humidity 30%.

■ Please contact with engineer for correct generator capacity selection when the load application can't meet with the standard reference.

■ diesel generators comply with standards :ISO8528,ISO 14000,ISO3046,GB755,BS5000,VDE0530,IEC34-1

# DIESEL GENERATOR DATA SHEET

## II. STANDARD CONFIGURATION

Engine	Cummins, including air filters, fuel filters, oil filter, starting motor and charging alternator etc.
Alternator	brushless AC alternator
Radiator	50°C, fan protective shroud
Base Frame	≤550KW: base mounted fuel tank, anti-vibration pads, battery holder >550KW: channel steel base frame, anti-vibration pads, battery holder
Circuit Breaker	≤1250A : Molded case circuit breaker(MCCB)
Control System	DEEP SEA 6020
Start Battery	Dry charged battery, available for 6 times starts under standard condition; connection cables.
Installation Accessories	Bellow, Elbow and flange, Exhaust silencer, etc.
Tool	standard
Documents	Electric drawing, operation & maintenance manual, certification etc.

## III. OPTIONAL CONFIGURATION

Engine Accessories	◇ Heavy-duty air filter ◇ Coolant heater ◇ Lub oil heater ◇ Fuel and Water Separator
Alternator And Accessories	◇ Stamford ◇ Leroy Somer ◇ Marathon ◇ Anti condensation heater ◇ PMG ◇ High voltage ____ kV
Cooling System	◇ 50°C radiator ◇ Heat exchanger + water cooling tower + External water circulation pumping system ◇ Remote horizontal water tank system
Control System	◇ AMF ◇ Parallel ◇ Practical type in low temperature environment ◇ Control Screen Heater ◇ Other (Comap、DEIF)
Circuit Breaker	◇ 3/4 poles ◇ Fixed/handcart type ◇ Electric mechanism
Automatic Transfer Switch	◇ ATS cabinet
Start Battery	◇ Nickel-cadmium battery ◇ Maintenance-free battery ◇ Power charger and selector ◇ Charging current meter
External Fuel Tank	◇ 500L ◇ 1000L ◇ 1500L ◇ 2000L ◇ 2500L ◇ 3000L ◇ 4000L ◇ 5000L
Others	

# DIESEL GENERATOR DATA SHEET

## IV. ENGINE DATA

Engine Model	6CTA8.3-G2	Engine Power	187	kW
Aspiration	Turbocharger& Aftercooled	Displacement	8.3	L
Type	In-line	Bore×Stroke	114×135	mm
No. of Cylinders	6	Compression Ratio	17.3:1	
Governor Type	Electronic Governor	Rated Speed	1800	RPM

### ■ Fuel System

Prime Power Fuel Consumption	44	L/h	Standby Power Fuel Consumption	50	L/h
Fuel #	ASTM D975 No.2-D or BS2869 1998 Class A1, A2		Injection System	BYC PB	

### ■ Lubrication System

Lub Oil Capacity	27.6	L			
Lub #	API CF-4 15W40		Max. Temperature	121	°C

### ■ Coolant System

Coolant Capacity	30.6	L	Max. Top Tank Temp.	100	°C
Std. Thermostat (Modulating) Range	82 - 95	°C	Fan Drive Method	Shaft drive	
Cooling Fan Air Flow	408	m <sup>3</sup> /min			

### ■ Air Intake System

Combustion Air Flow	13.56/14.22	m <sup>3</sup> /min	Maximum Air Intake Restriction	3.7	kPa
---------------------	-------------	---------------------	--------------------------------	-----	-----

### ■ Exhaust System

Exhaust Gas Flow	35.16/39.24	m <sup>3</sup> /min	Max. Back Pressure	10	kPa
Exhaust Gas Temp	≤550	°C	Exhaust Pipe Size	φ102	mm

# DIESEL GENERATOR DATA SHEET

## ■ Starting System

Start Mode                      DC24V Electric start                      Battery                      2×120                      Ah

## V. ALTERNATOR DATA

Alternator Model	SLG274G	Rate Power	174.8/218.5 kW/kVA
PF.	0.8	Voltage	440/254 V
Phase	3	Frequency	60 Hz
Connection	3P 4W/Y	Bearing	1
Winding Pitch	2/3	Proteccion Class	IP21
Insulation Class	H	Efficiency	93.3%
Tel. Influence	TIF: <50	Voltage Regulation	±1.0%
Harmonic Coefficient	THF: <2%	AVR	AS440
Voltage Adjust Scope	≥±5%	Excitation System	Self Excited

## VI. CONTROL SYSTEM DATA

**MODEL DSE6020**

### ■ Main feature

Electronic J1939 (CAN) and nonelectronic MPU and alternator sensing engine support for diesel, gas and petrol engines all in one variant.

With a number of flexible inputs, outputs and protections, the modules can be easily adapted to suit a wide range of applications.



### ■ Key Function

- |  |   |   |
|--|---|---|
| ▲Utility voltage sensing                               | ▲Configurable staged loading outputs                  | ▲Configurable remote start input                                  |
| ▲Generator/load power monitoring (kW, kV A, kV Ar, pf) | ▲CAN, MPU and alternator speed sensing in one variant | ▲Alternative configuration  |
| ▲Generator overload protection (kW)                    | ▲3 engine maintenance alarms                          | ▲Alarm including common alarm,common electric and common shutdown |
| ▲Efficient power save mode                             | ▲Engine speed protection                              | ▲LCD and LED alarm indication                                     |
| ▲Mains and generator closed via front panel            | ▲Engine pre-heat                                      | ▲Configurable event log (50)                                      |
| ▲4 configurable DC outputs                             | ▲Multiple date and time scheduler                     | ▲Heated display option available                                  |
| ▲4 configurable analog./digital inputs                 | ▲Engine idle control for starting & stopping          | ☆ <i>For more information, please visit the official website</i>  |

# DIESEL GENERATOR DATA SHEET

- ▲ 6 configurable digital inputs
- ▲ Fuel pump control
- ▲ Support for 0-10 V & 4-20 mA oil pressure sensors
- ▲ Battery voltage monitoring
- ▲ Start on low battery voltage

## VII. WARRANTY POLICY

1. Guarantee for one year or 1000 hours (accord to whichever reach first) from ex-factory date. Refer to 《 Diesel Generator Warranty Manual》 for more details.
2. Wearing parts( filters), incorrect man-made operation, maintenance failures are excluded from the warranty policy

## VIII. DRAWING (for illustration purposes only)

